



# Recovery and Reconstruction of Gaza

Ministry of Public Works and Housing  
State of Palestine

November 2025

# Introduction

Since October 7, 2023, the Gaza Strip has faced aggression that resulted in widespread destruction of buildings, social and economic facilities, and essential infrastructure.

The plan is based on the Egyptian Initiative, the 2005 Regional Plan, the 2018 Comprehensive Transportation and Roads Plan, the Governmental Recovery and Reconstruction Plan, and IRDNA.

A spatial vision for the reconstruction and development of the Gaza Strip up to 2030 has been developed, including:

- ✓ Identifying sites for interim shelter and rubble collection areas.
- ✓ Landuses for social and economic facilities, housing, infrastructure.
- ✓ Foundations for medium-term development.

The plan is based on the national goal to end the occupation and establish an independent Palestinian state along the 1967 borders.

# Plan Goals

**1**

**Comprehensive Spatial Vision  
for Gaza Reconstruction**

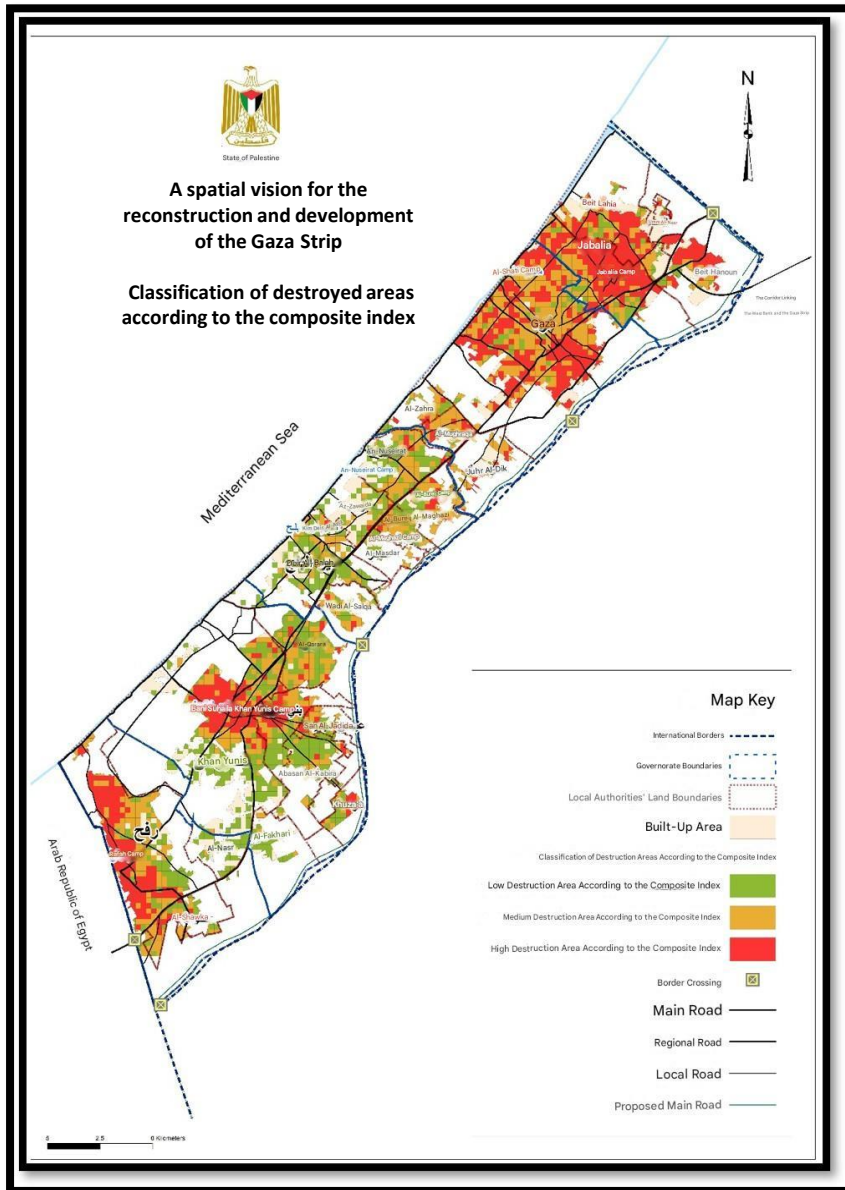
**2**

**Roadmap for MoPWH  
Interventions**

# Plan's Methodology

- ✓ Utilize the spatial vision for Gaza's reconstruction and development, employing GIS and spatial analysis.
- ✓ Review previous plans and studies: the Egyptian Initiative, Palestinian Recovery Plans (2025), the Regional Plan (2005), and the Comprehensive Roads and Transportation Plan (2018).
- ✓ Analyze population & demographic data & projections up to 2030.
- ✓ Analyze satellite imagery from before (2022) and after the aggression to determine the scale of damage.
- ✓ Build a comprehensive spatial database.
- ✓ Develop a composite index of destruction and urban density to define intervention priorities.
- ✓ Identify sites for temporary shelter and rubble collection.
- ✓ Formulate a comprehensive spatial vision for 2030, covering housing, infrastructure, and socio-economic sectors.
- ✓ Prepare spatial intervention maps and a five-year implementation roadmap.

# Spatial Analysis



A composite index has been developed, integrating both the percentage of building destruction and urban density, to provide a realistic and equitable assessment of the spatial impact of the damage.

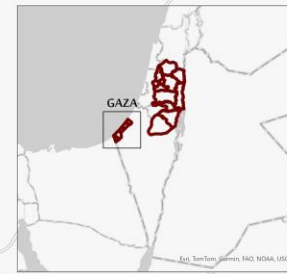
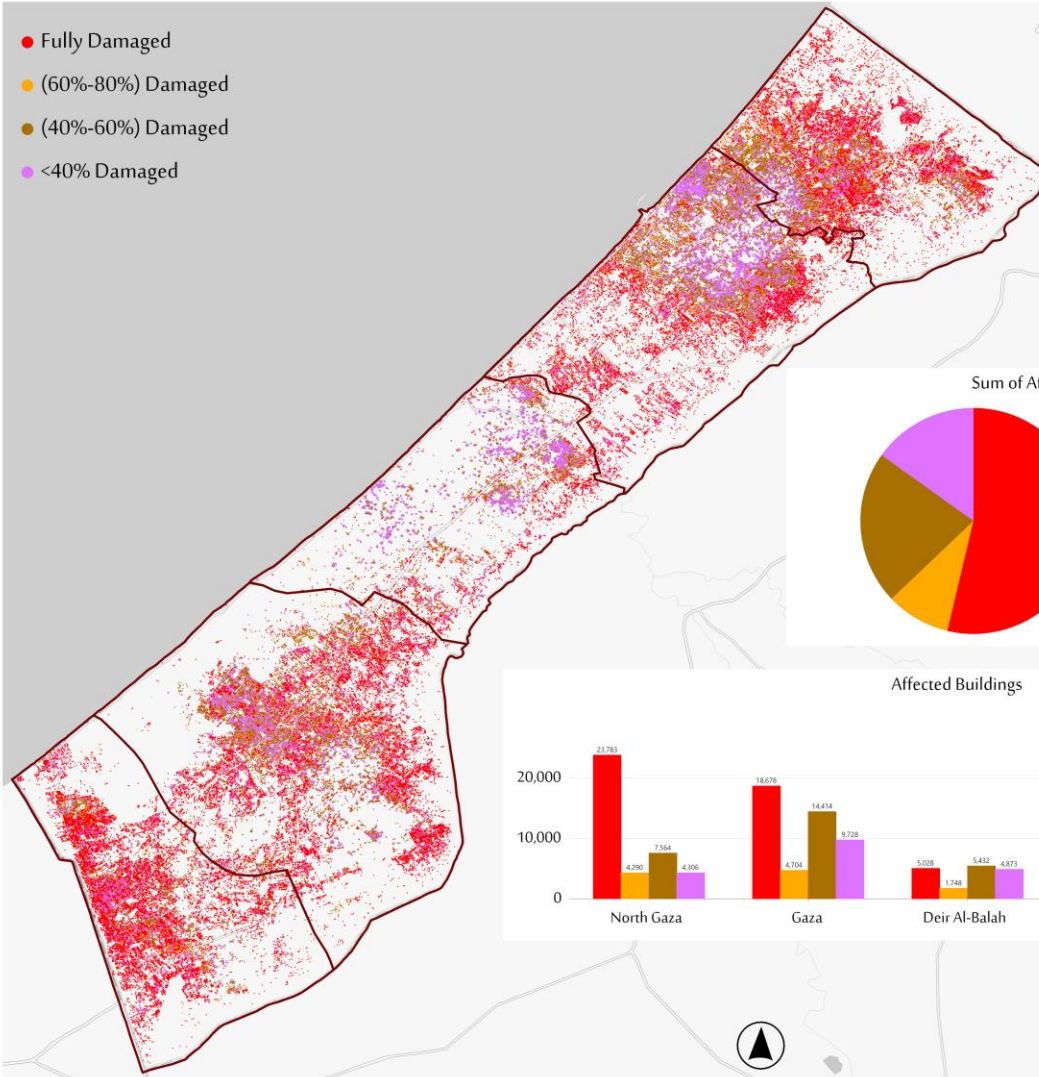
## Weights

High	Medium	Low	% Damage ← Building Density ↓
2	1.5	1	Low
4	3	1.5	Medium
6	4	2	High



- Analytical cell / quadrant requiring **limited or low-impact intervention**
- Analytical cell / quadrant requiring **additional assessment**
- Analytical cell / quadrant requiring **urgent and high-priority intervention**  
(combining severe destruction and significant urban density)

- Fully Damaged
- (60%-80%) Damaged
- (40%-60%) Damaged
- <40% Damaged



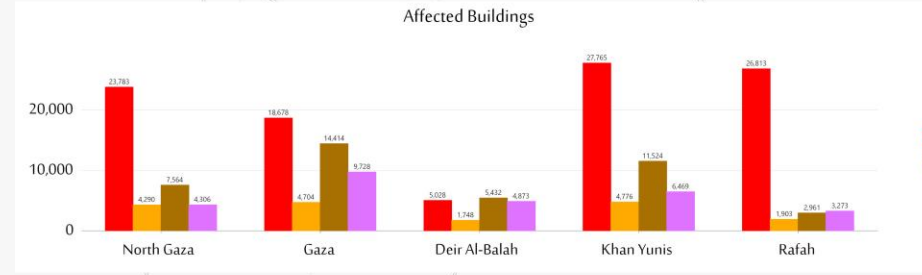
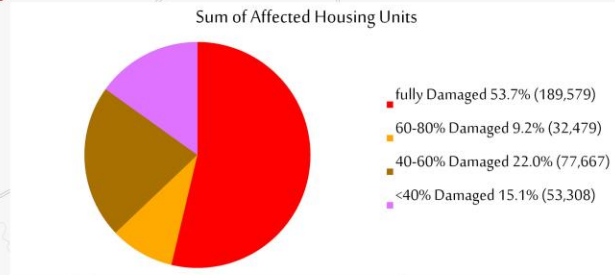
# GAZA STRIP

GazaStrip Total Area  
km 365



The estimated number of  
Affected buildings:  
190,032 building

The estimated number of  
Affected Housing Units:  
353,034 Housing Units



Sources:  
- UNOSAT  
- Palestinian Central Bureau of Statistics



\*\* The numbers and percentages mentioned in this report are estimated and produced based on the analysis of the aerial photo on 7/2025 and the data of Palestinian Central Bureau of Statistics 2017

# Housing Sector / Temporary Shelters

## TEMPORARY SHELTERING METHODOLOGY

Estimated number	methodology
60,000	Living in Partially Damaged Units (Less than 40%)
89,943	Social networks – housing with relatives, involving financial compensation for the host family – or other housing alternatives.
200,000	Prefab Units
353,043	Total

## DAMAGES IN HOUSING

# of Units	Degree of Damage
299811	Severely Damaged
53223	Partially Damaged
353,043	Total

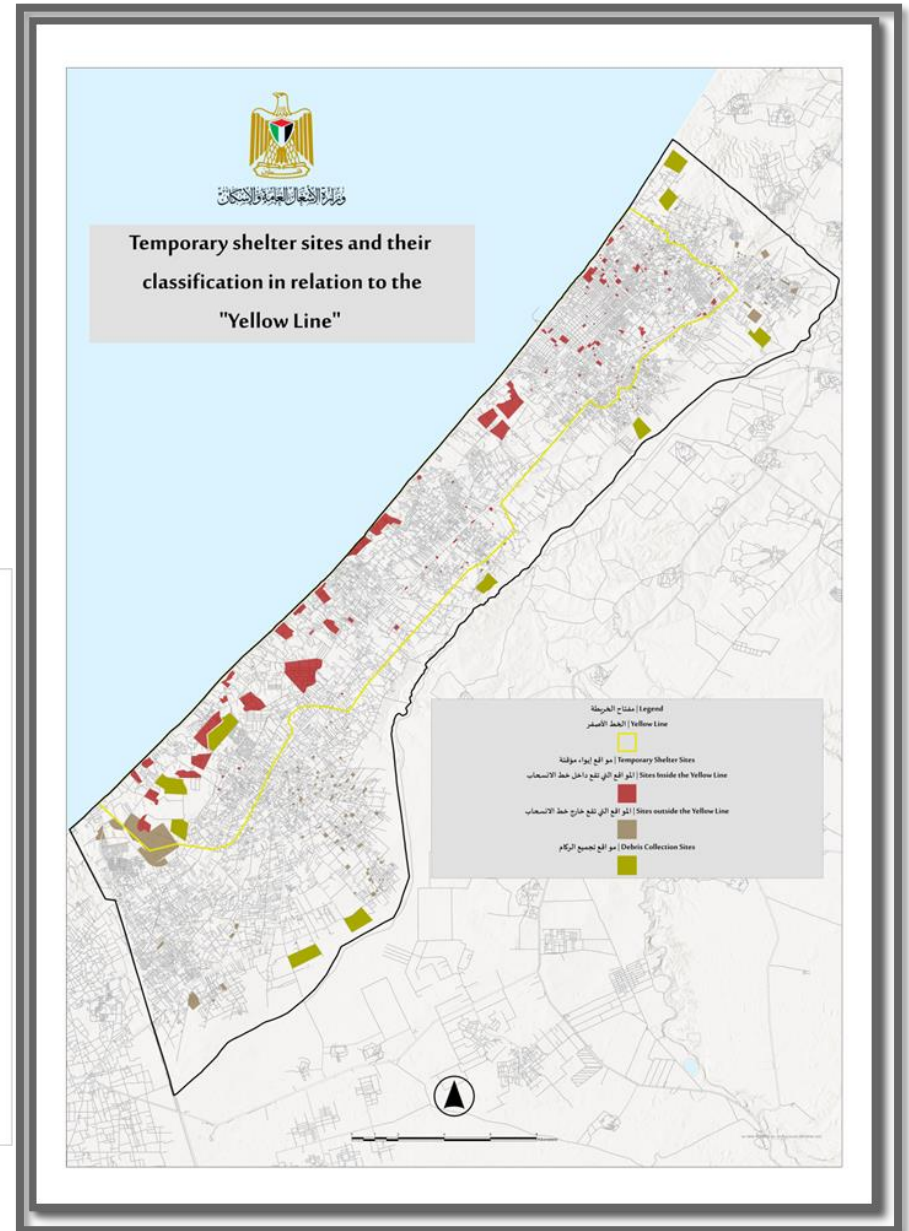
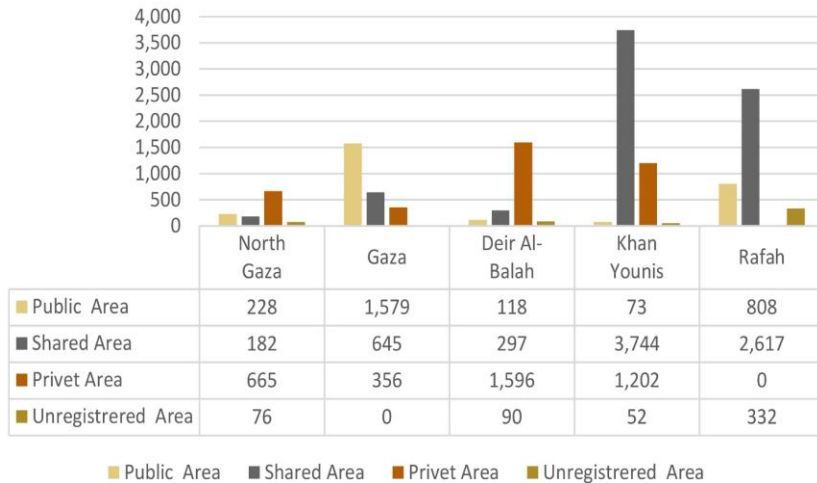
# Spaces required for temporary shelter

Area Needed for (Dunum)Shelter *	# of Targeted IDPs	# of Prefab Units Needed (%70)	# Units Totally Damaged	Gov.
4634.4	259,524	46,344	66205	N. Gaza
4915.1	275,246	49,151	70216	Gaza
1587.6	88,904	15,876	22680	M. Gaza
5730.4	320,900	57,304	81862	Khanyoun is
4119.4	230,685	41,194	58848	Rafah
20987	1,175,259	209,868	299811	Total

# Shelter Sites

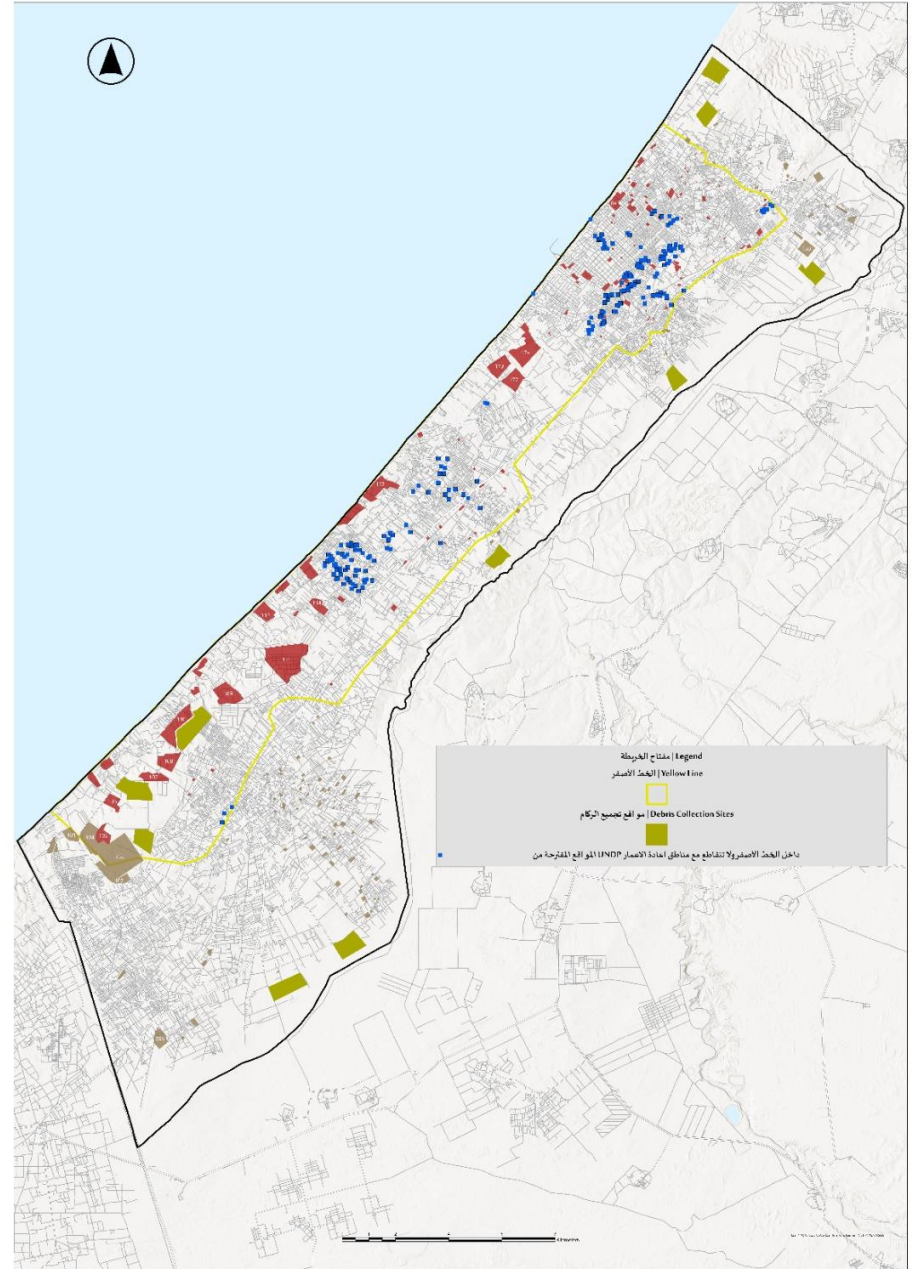
294 Sites Identified  
(14659 Dunums)

Distribution of Shelter Sites by Governorate and Ownership



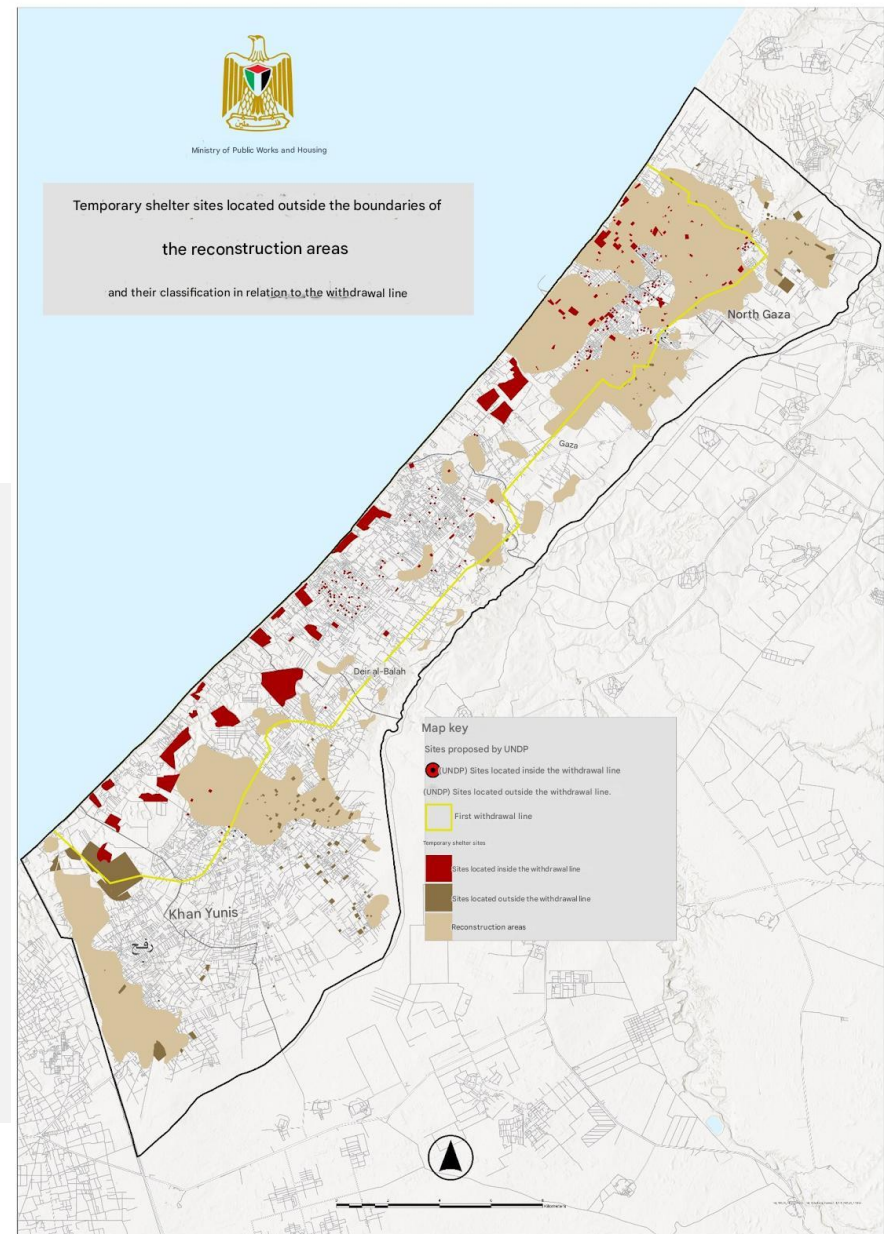
# Shelter Sites List 2

Governorate	No.	Area/Donum
North Gaza	29	243.69
Gaza	91	790.50
Deir al-Balah	85	1,196.42
Khan Younis	3	38.87
	<b>208</b>	<b>2,269.48</b>



# MoPWH Interventions in Shelter

- Field visits for identified sites
- Quick rehab. For 200 housing units
- Manufacturing tents – Project
- Establishing 2 shelter sites in Deir al-Balah for IDPs in flood-risk areas.



# Next Steps:

- Coordinate with national institutions to align interventions with the Government Shelter Plan.**
- Support joint implementation of priority shelter actions identified by MoPWH.**
- Ensure harmonized data, mapping, and reporting across partners**
- We look forward to enhanced cooperation, coordination, and information sharing to support the implementation of the national shelter plan**
- Coordinate with MOPIC to fund the Housing Shelter component .**

**Thank You**